



800-504-5684

info@bigdogbumpers.com

www.bigdogbumpers.com

GMC 2008 2500/3500 HD Front Bumper Replacement Installation Instructions

1) Remove (8) bolts that mount factory front bumper and tow hooks to truck frame. Retain tow hooks and hardware for future use. (see figure 1)

2) Remove (4) bolts from support bracket to truck frame found near wheel well. Discard hardware. (see figure 2)

3) Factory front bumper is held up by clips going from chrome part of bumper to painted body trim piece wrapped around the front of the truck under the headlights and grille. Carefully pull out on bumper, releasing the clips.

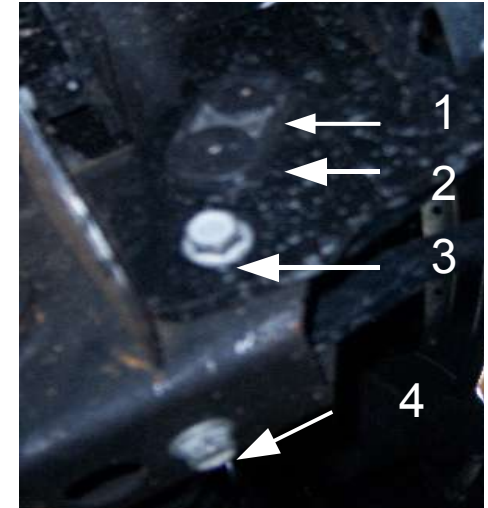


Figure 1

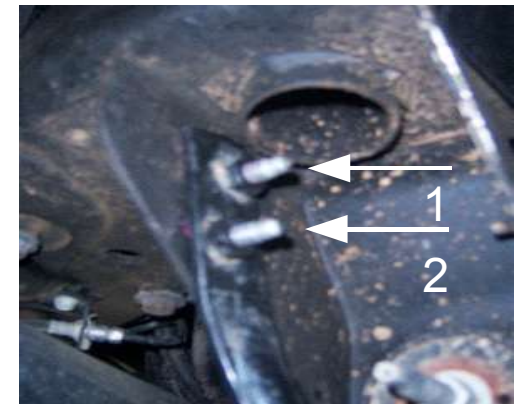


Figure 2

4) Place main bracket provided over truck frame and secure in place with bolts 1 and 2 removed in step 1. To ensure that brackets are correctly installed , center to center of inside holes should measure 26". Once measurement is correct proceed to install (2) 1/2" x 5" bolts provided. Tighten all bolts with 75 lbs of torque.
(see figure 3)

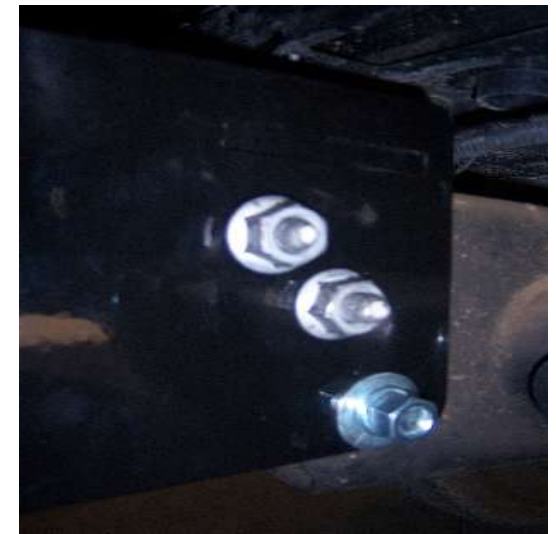


Figure 3

5) Lift bumper up to brackets and secure using (8) 1/2" x 2" bolts provided. Adjust bumper and tighten all bolts with 75 lbs of torque.

6) Slide safety support bracket provided through truck frame with welded nut facing inward and up. Secure end with 1/2" x 2" bolt provided. Rest opposite end on tow hook bracket and reinstall tow hooks using bolts 3 and 4 removed in step 1. Tighten bolts using 75 lbs of torque.
(see figure 4)



Figure 4

Installation Kit Provided:

- | | |
|----------------------------------|-------------------------|
| (1) right main bracket` | (2) 1/2" x 5" hex bolt |
| (1) left main bracket | (12) 1/2" x 2" hex bolt |
| (1) right safety support bracket | (12) 1/2" flat washers |
| | (12) 1/2" hex nuts |
| (1) left safety support bracket | |